

LIBRARY OF THINGS

AGES
2+



CODE AND GO BUMBLEBEE (BRIO TODDLER)



WHAT'S IN THIS KIT?

1x Bumblebee



Bumblebee

BEFORE RETURNING

- Please ensure all parts and returned in good condition with the set

This item **MUST BE** returned to the library desk during branch opening hours.

DO NOT RETURN VIA THE RETURN CHUTE

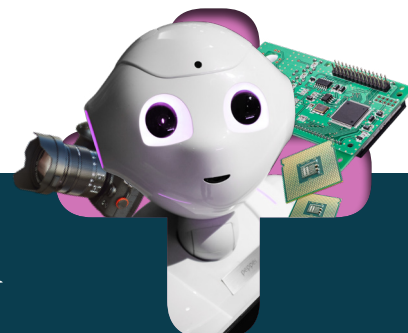
We'd love to see your stories!

Tag us on Instagram and Facebook

  @hobsonsbaylibraries

#libraryofthings

STEAM TECHNOLOGIES



WHAT YOU NEED

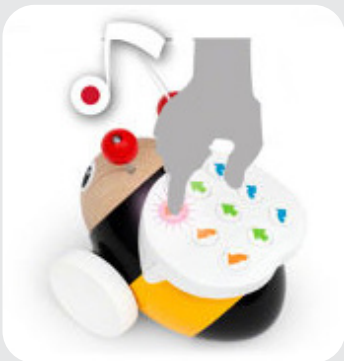
- 4x AAA batteries
- A Phillips head Screwdriver
(to open battery compartment)

HOW TO USE

- The Code and Go Bumblebee has three modes: **OFF**, **Silent Mode** and **Music Mode**.
(The switch is located under the back wings of the bee)
- Once turned on (in either silent or music mode) it only takes 3 steps to program

1

Press one of the three buttons at the top
(left, right or forward)



2

Then one of the three buttons in the middle
(left, right or forward)



3

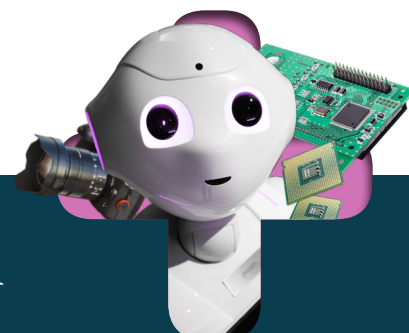
Finally one of the three buttons at the bottom
(left, right or forward)



- Once those three buttons have been pressed, the bee will play out that sequence
(with or without music)
- There are 27 difference patterns you can create
- The bumblebee will turn off after 5 mins of inactivity
(to turn back on again, switch to OFF, then back onto ON)

TROUBLESHOOTING AND SUPPORT

You can find more instructions and technical details at the BRIO official website [here](#)

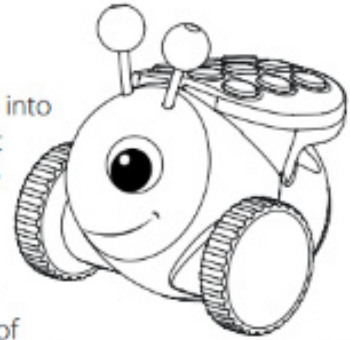


BRIO®

Battery operated play functions:

The Code and Go Bumblebee offers young children an early introduction into programming in a fun and playful way. By using the easily accessible input buttons on its back to program up to 27 different movement patterns, the child can then watch the little bee come to life with playful sounds and blinking lights.

Your new Code and Go Bumblebee has three modes: OFF, ON and SILENT MODE as shown in the illustration. The button is located under the wings of the Code and Go Bumblebee.



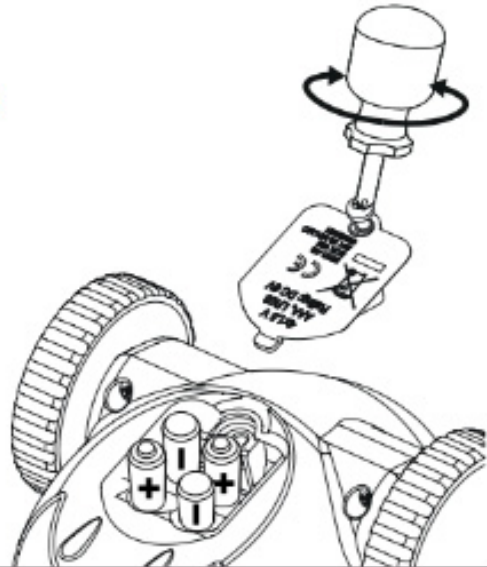
Keep in mind that:

- For best result, always play with the toy on a clean, flat surface.
- **The child's hair can easily get caught in moving parts.**
- The toy is not water-resistant and shall not be washed in a dishwasher.
- Wipe off the toy with a clean cloth to remove any foreign materials.
- The toy shall not be disassembled for safety reasons.
- The plastic in the toy can fade over time.
- The toy is put into sleep after 5 minutes of inactivity.
- To reactivate, just turn the toy **OFF** and restart the toy **ON**.
- Avoid strong sunlight and other heat sources.
- Only indoor play is recommended.

Please visit our website at brio.net for more information on how to care for your prized BRIO toy.

Installing and replacing batteries:

The light- and sound effects of this toy is powered by 4 x 1,5 AAA batteries (not included). Use a screwdriver to open the battery compartment cover (see illustration). Always position new batteries as shown (+/-). Close the cover and tighten the screw.



Important:

- **Only adults should install and replace batteries.**
- Different types of batteries or new and used batteries are not to be mixed.
- Only recommended batteries of the same or equivalent type as recommended (1.5V) are to be used.
- Batteries are to be inserted with the correct polarity.
- Exhausted batteries are to be removed from the toy.
- The supply terminals are not to be short-circuited.
- Always remove batteries if the toy is not to be used for some time.
- Protect the toy from water or dampness.
- Do not attempt to recharge non-rechargeable batteries..
- Rechargeable batteries are to be removed from the toy before being charged.
- Rechargeable batteries are only to be charged under adult supervision.
- Used batteries and electrical components must be disposed of at an approved collection point.
- Electrical components or batteries must not be thrown with household waste.

English Instructions

STEAM TECHNOLOGIES

