

LIBRARY OF THINGS

AGES
6+



DASH ROBOT

Hobsons Bay
COUNCIL+

Hobsons Bay
LIBRARIES

**HOBSONS
BAY CITY
COUNCIL**

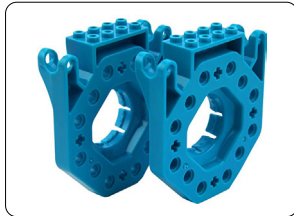


WHAT'S IN THIS KIT?

- 1x Dash robot
- 1x USB charging cable
- 2x Brick extenders



Dash robot



Brick extenders



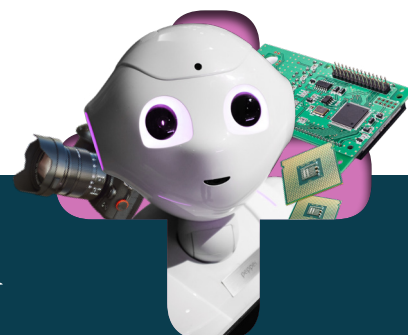
USB charging cable

BEFORE RETURNING

- Please erase your data from the robot. To do this press and hold the 3 orange buttons on top and power button until all the lights turn red and then they turn off.
- Please ensure all parts are returned in good condition with the set

This item **MUST BE** returned to the library desk during branch opening hours.

DO NOT RETURN VIA THE RETURN CHUTE



WHAT YOU NEED

- A smart device (either a phone or tablet with Bluetooth connectivity)
- 'One of the Wonder' workshop Apps (these are free with no in-app purchases)

Compatible Apps:

You can find what apps are compatible with your robot [here](#)



These are the apps we recommend using:

Go

Path

Wonder

Blocky

(All are available on both the Apple App Store and Google Play Store for free with no in-app purchases)

NOTE:

Cue app is not compatible with Dash robot.

Xylo app requires additional accessories not in kit

DEVICE COMPATIBILITY DETAILS

Please check the App/ Google Play Store for up-to-date details regarding compatible devices.

BEFORE YOU START

- Download app/s
- Charge the robot using the USB cable with the Kit

CHARGING INFORMATION

- Dash has a rechargeable battery
- Plug into the wall or computer via the included USB cable to charge
- It takes 60 to 90 minutes to charge

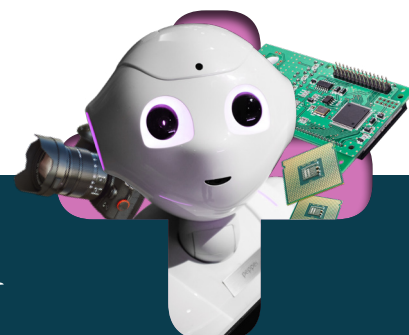
- The robot is charging when the micro USB connection port illuminates with the cord plugged in and when the light turns off the robot is fully charged.
- Dash has a battery life of 90 minutes
- The power button will flash when they have less than 10 % battery left.

SET UP (CONNECTING TO DASH ROBOT)

1. Open up either, Go, Path, Wonder or Blockly app
2. When first opening the apps, you may be asked to allow bluetooth access (this is required to connect with the robot)

3. Ensure robot is charged and powered on (to turn on use the white power button on the side of the robot) and is physically close to your device when attempting to connect
4. App will talk you through steps to connect to robot
5. Once connected your robot may require an update (which normally only takes a few minutes to perform)

For information about set up for brick extensions you can go [here](#)



HOW TO PLAY

You must download the following apps and connect via a smart device to interact with the robot

GO App

- Allows you to control/ drive the robot via the app (*including changing colours and recording audio*)
- This is a good one to get started with to learn how to connect and control your Robot.

Path App

- Learn how to control and drive your Dash robot through progressive challenges and lessons

- This app teaches people coding concepts and basics and is a good stepping stone before you move to the next apps.

Wonder App

- Teaches blockly programming skills through guided activities and challenges
 - **Controller:** will allow you to control the robot manually (*like Go App*)
 - **FreePlay:** you can upload pre-made sequences (*or create your own*)
 - **Scroll Quest:** will walk you through various challenges (*this is a good starting point*)

- **Wonder Cloud:** allows you to share projects with others
- **Inventors Log:** Tracks your progress through challenges

Blockly App

- Allows you to code and play out sequences on the robot
 - **Puzzles:** Will walk you through some progressive challenges (*this is a good starting point*)
 - **My Projects:** allows you to download shared projects (*or create your own*)
 - Assignments is not able to be used outside of a classroom setting for individual users

ACTIVITY IDEAS

Additional activities for your dash robot can be found [here](#)



The brick connectors are compatible with LEGO-style bricks, so you can also make your own additions to your Dash robot.

TROUBLESHOOTING AND SUPPORT

There is an excellent collection of support documents and videos [here](#)



We'd love to see your stories!

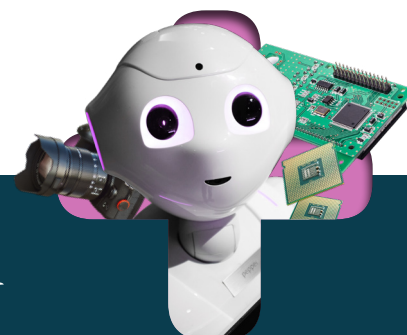
Tag us on Instagram and Facebook



@hobsonsbaylibraries

#libraryofthings

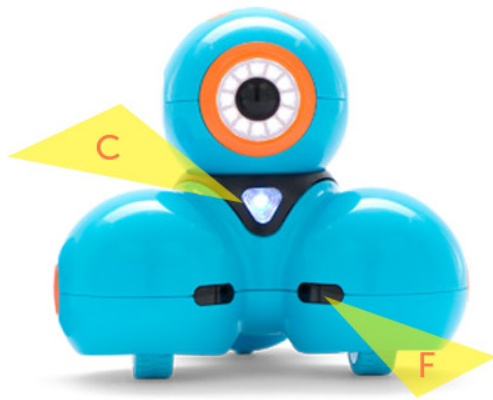
STEAM TECHNOLOGIES



DASH ROBOT

TECH SPECS FOR DASH & DOT

Children can program Dash & Dot using intuitive, drag-and-drop interfaces on iPads and Android tablets. Here are some of the features they can control!



Dash

Drive - Dash can **drive forward**, **backward**, **turn left** (spin), and **turn right** (spin). There are two wheels beneath the left and right side of Dash's body. You can steer Dash by changing the speed and/or direction of either wheel.

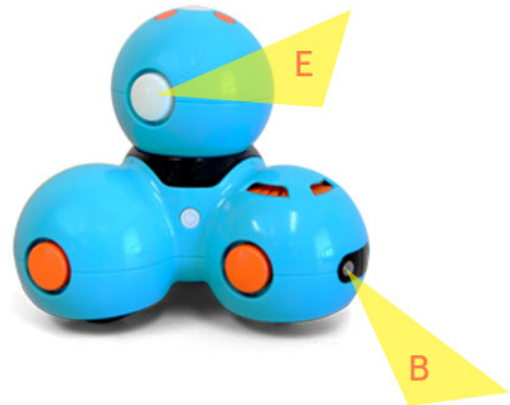
Head Motion - Dash can look up (25 degrees), down (10 degrees), left (120 degrees), or right (120 degrees).

Lights - There are 12 LEDs in Dash's eye. In Dash's ears (E) and chest (C), there are RGB LEDs. In Dash's tail, there are 2 red LEDs.

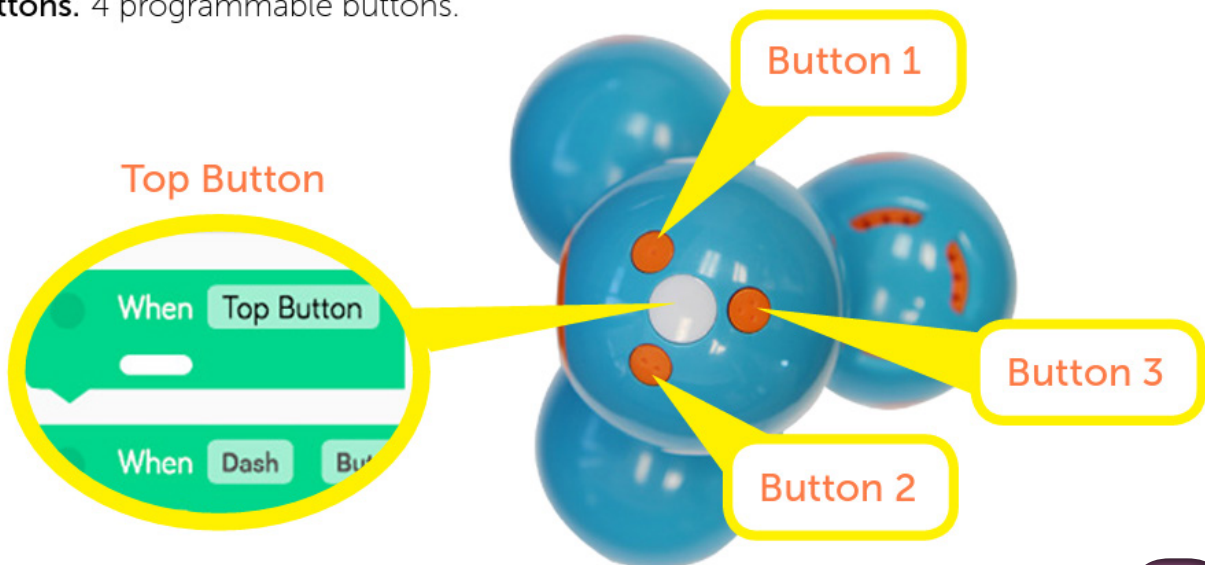
Sounds - Includes a variety of pre-programmed sounds!

Microphone - Dash has 3 microphones, allowing Dash to **hear claps** and identify the **direction of your voice**.

Distance sensors - Dash has 2 distance sensors in front (F) and 1 in back (B), allowing Dash to detect **obstacles in front** and **objects behind** with infrared lights.



Buttons. 4 programmable buttons.



STEAM TECHNOLOGIES

